

# UTILITY COORDINATION

In many cases after a site assessment has been performed by a facilities manager or contractor, it is determined that new service or upgrades are required. This is to supply the additional energy needed for your planned infrastructure that is outside of the original panel and utility service design. Use this guide to help you start conversations with Utility Partners.



## IDENTIFY

Identify your energy utility; The State of California has many electric utilities be sure to verify what entity provides power to your project site.



## THE BASICS

Site assessments will determine the following services provided by the utility provider below:



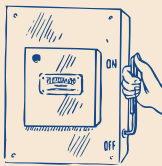
**Transformer Upgrades:** increases tolerance for higher power, to support the site's additional energy load.



**Service Upgrade:** increases the site's panel amperage to sustain additional energy load.



**New Service:** a secondary meter designed specifically for reading EVSE energy usage.



## PREPARE

When reaching out to your local utility, have the following items on hand:

- ☒ Detailed Construction Drawings
- ☒ Signed copy of Easement rights from property owner (if applicable).
- ☒ Preliminary Site Plan if Final Site Plan with construction drawings are not available.

# TIPS AND TRICKS



Contact your local utility as early as possible to avoid delays and unnecessary costs.



Early communication will help you determine whether pre-ordering required equipment is warranted.



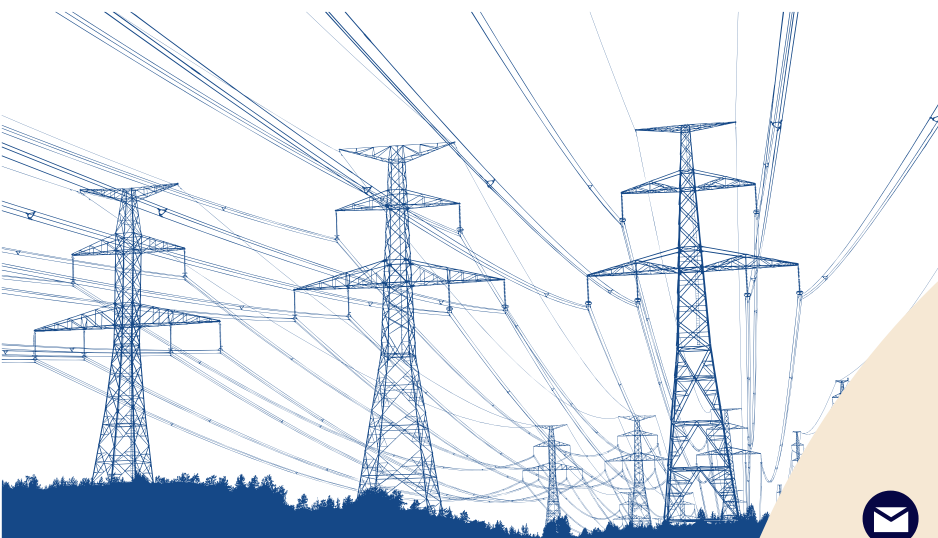
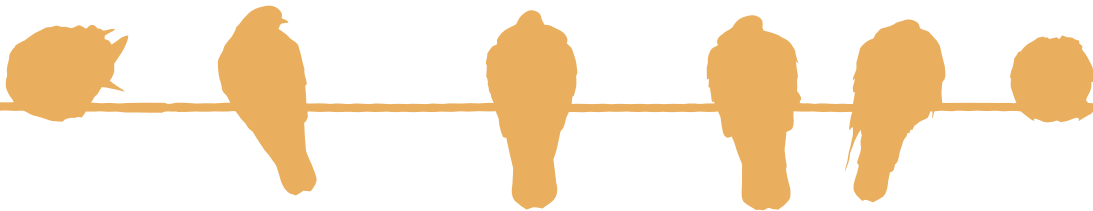
If you are a lessee for your project site, provide an easement document to utility signed by property owner.



If your project site is located in a territory serviced by a municipal owned utility, consider looking into incentives that you can use to lower project costs.



Be sure to budget in costs and adjust your project timeline for utility services as they can increase cost and delay your project.



COMMUNITIES IN CHARGE



[communitiesincharge@calstart.org](mailto:communitiesincharge@calstart.org)



[www.thecommunitiesincharge.org/](http://www.thecommunitiesincharge.org/)